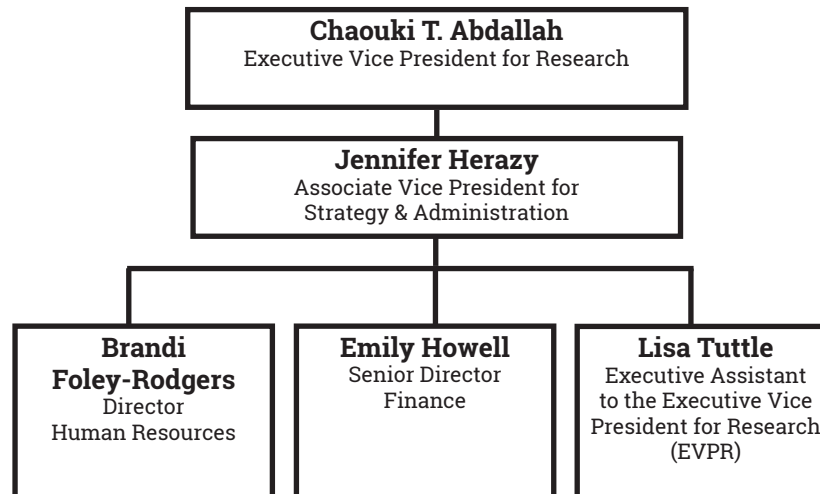
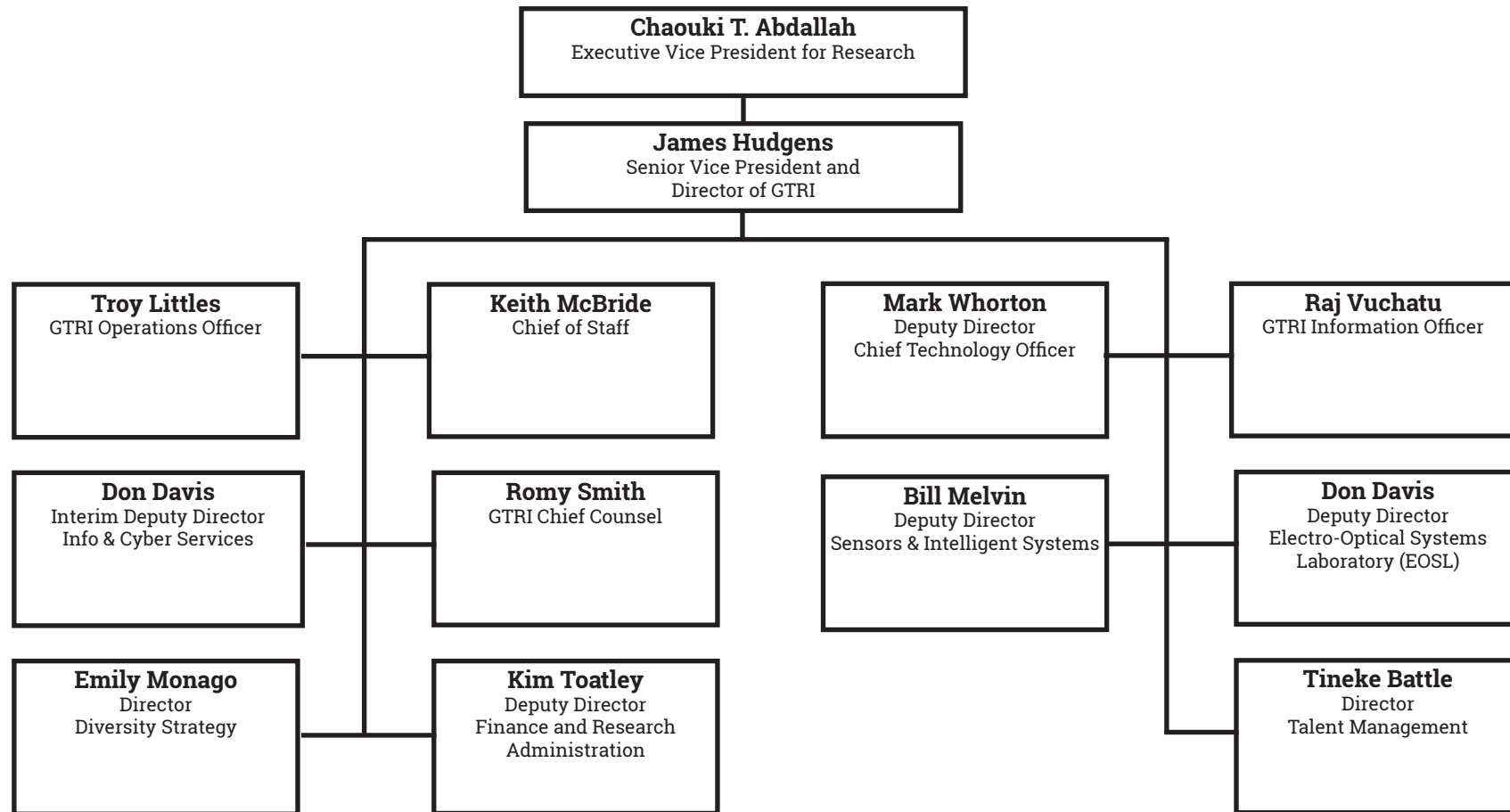
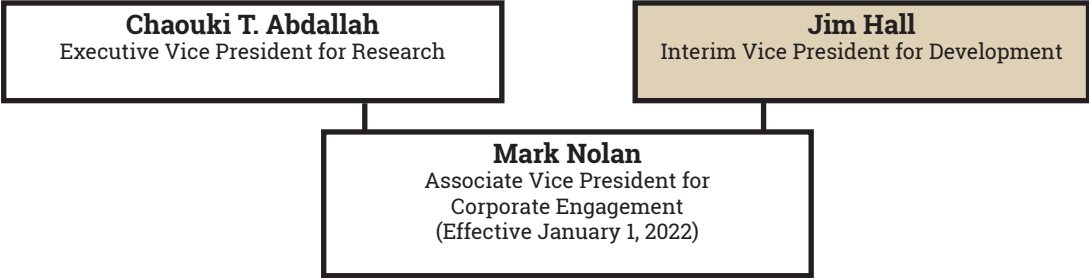



Institute units, outside of EVPR reporting lines.

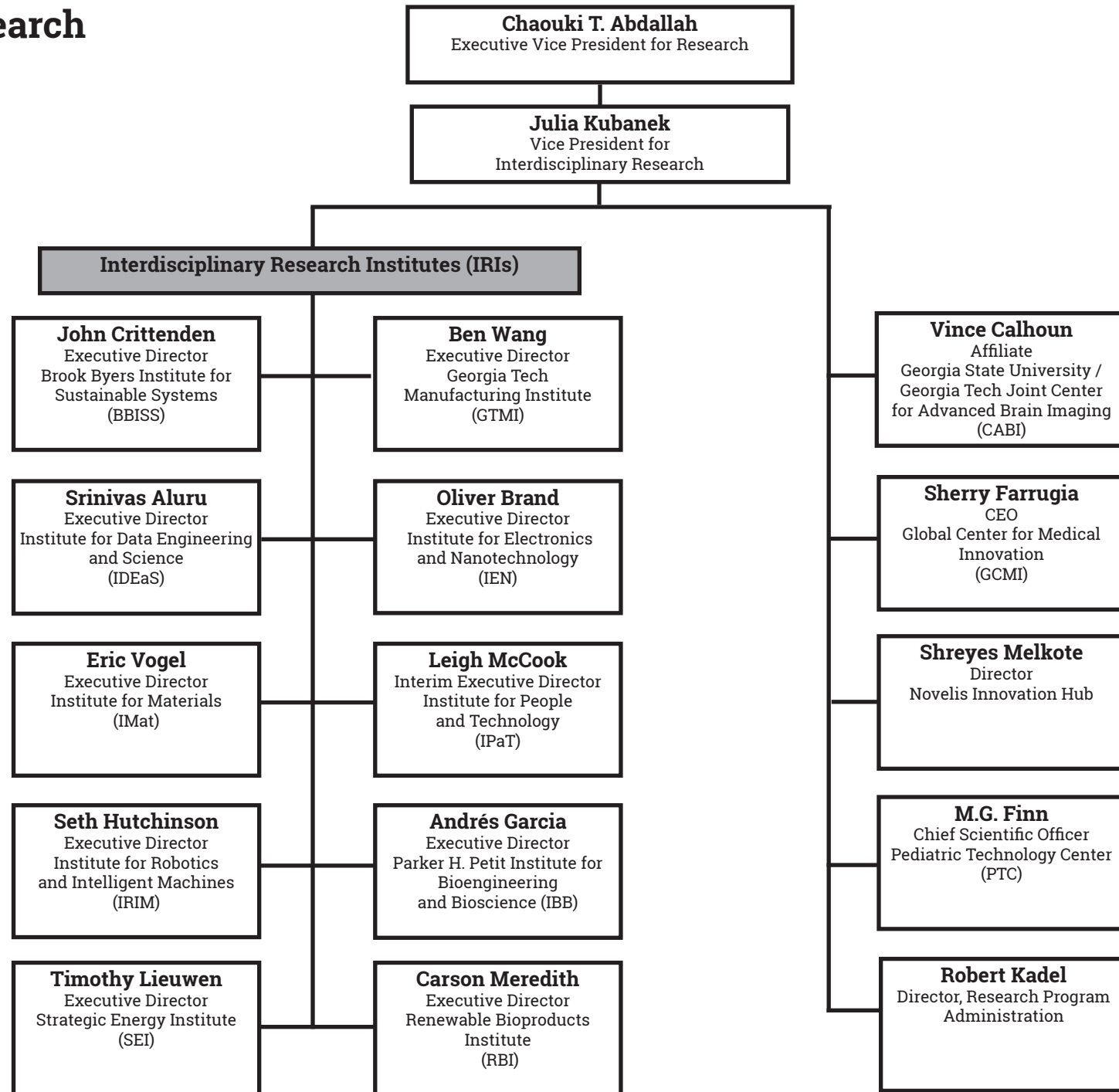


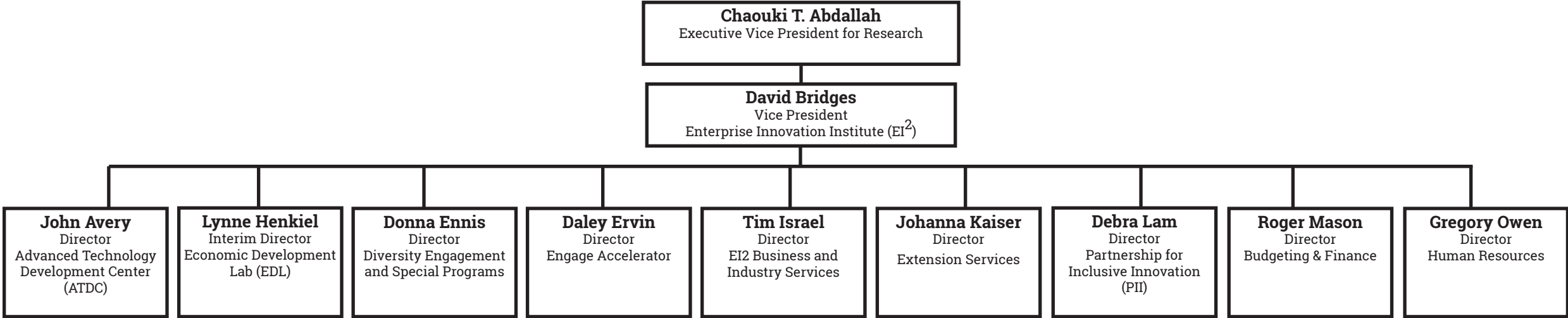


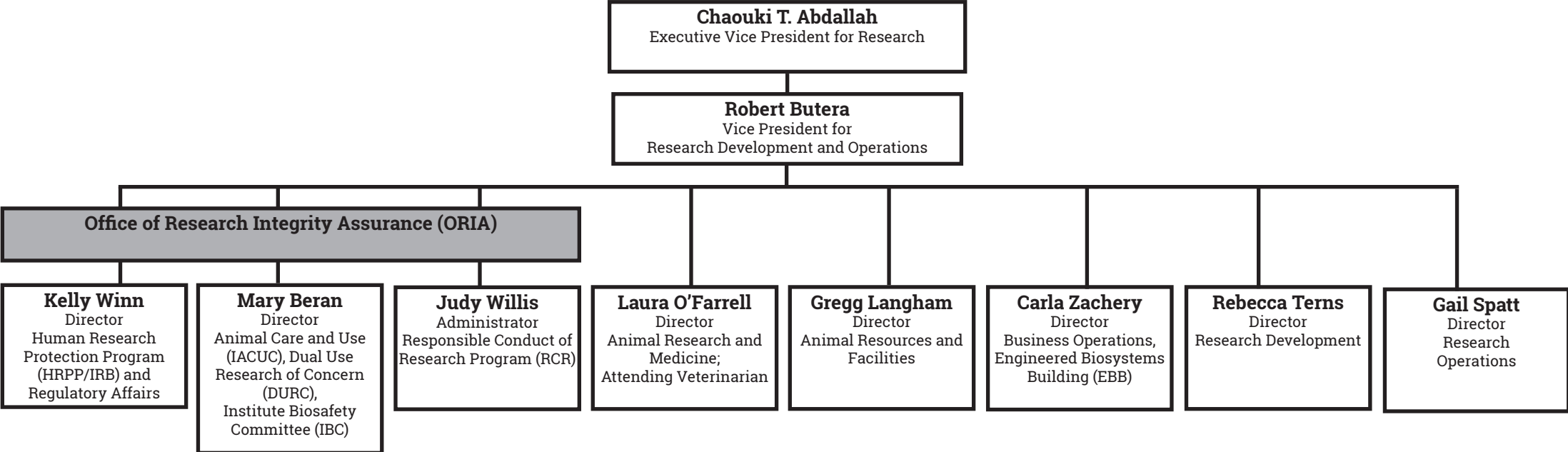


**Coming Soon**

 Institute units, outside of EVPR reporting lines.

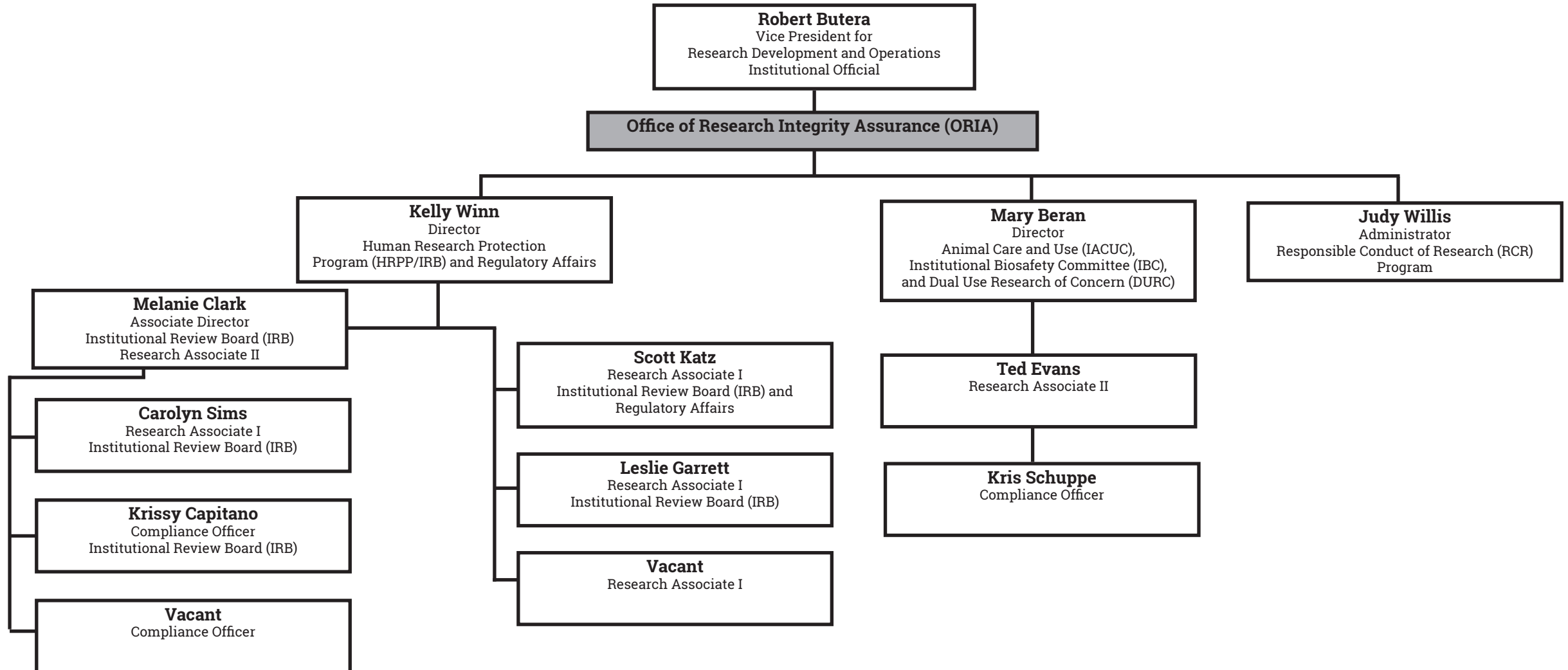






# Office of Research Integrity Assurance (ORIA)

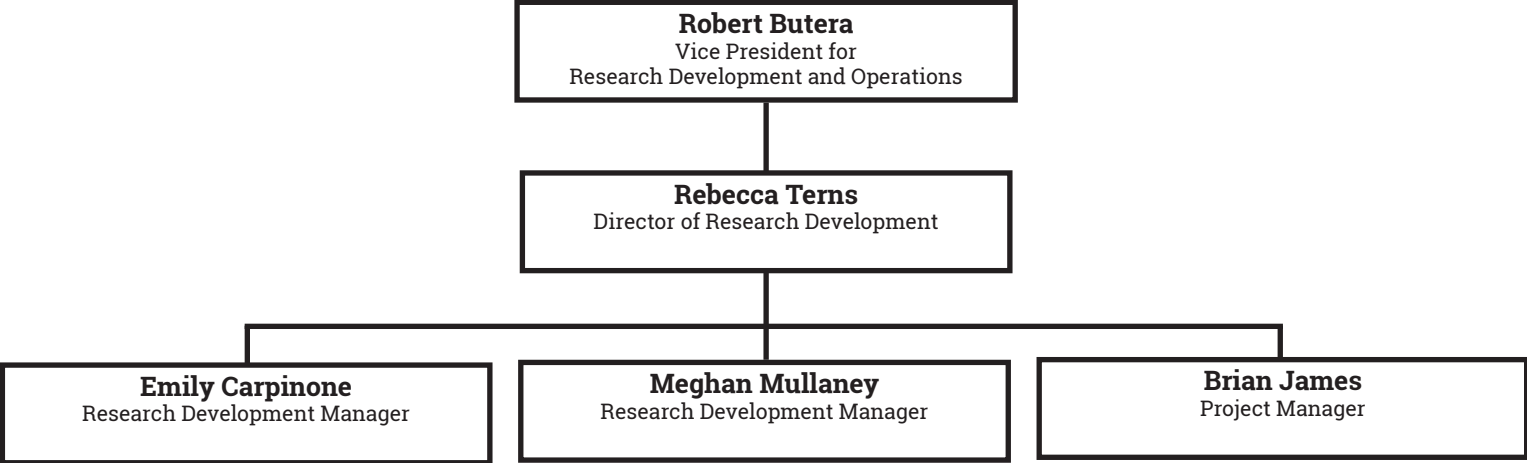
<http://oria.gatech.edu/>





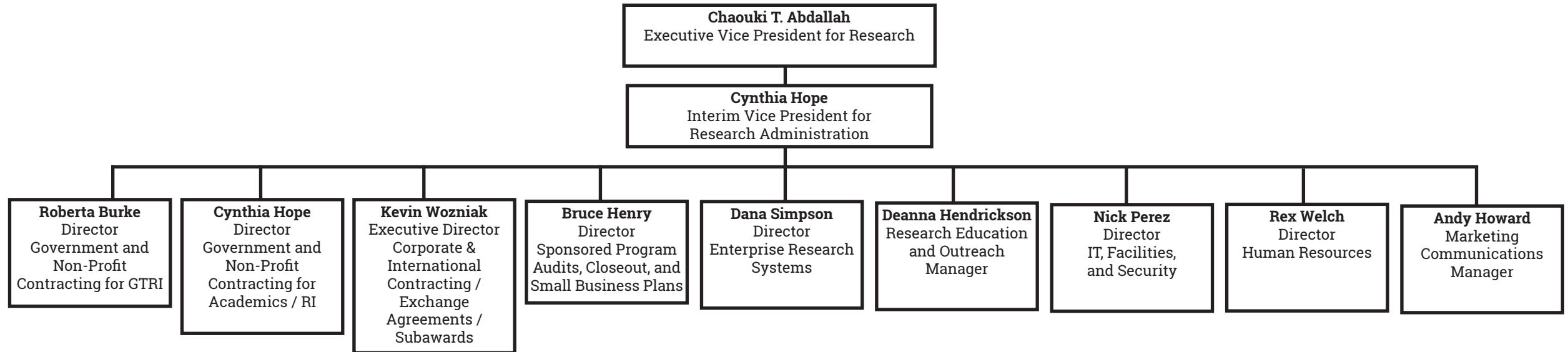
# Research Development

<http://research.gatech.edu/office-research-development>



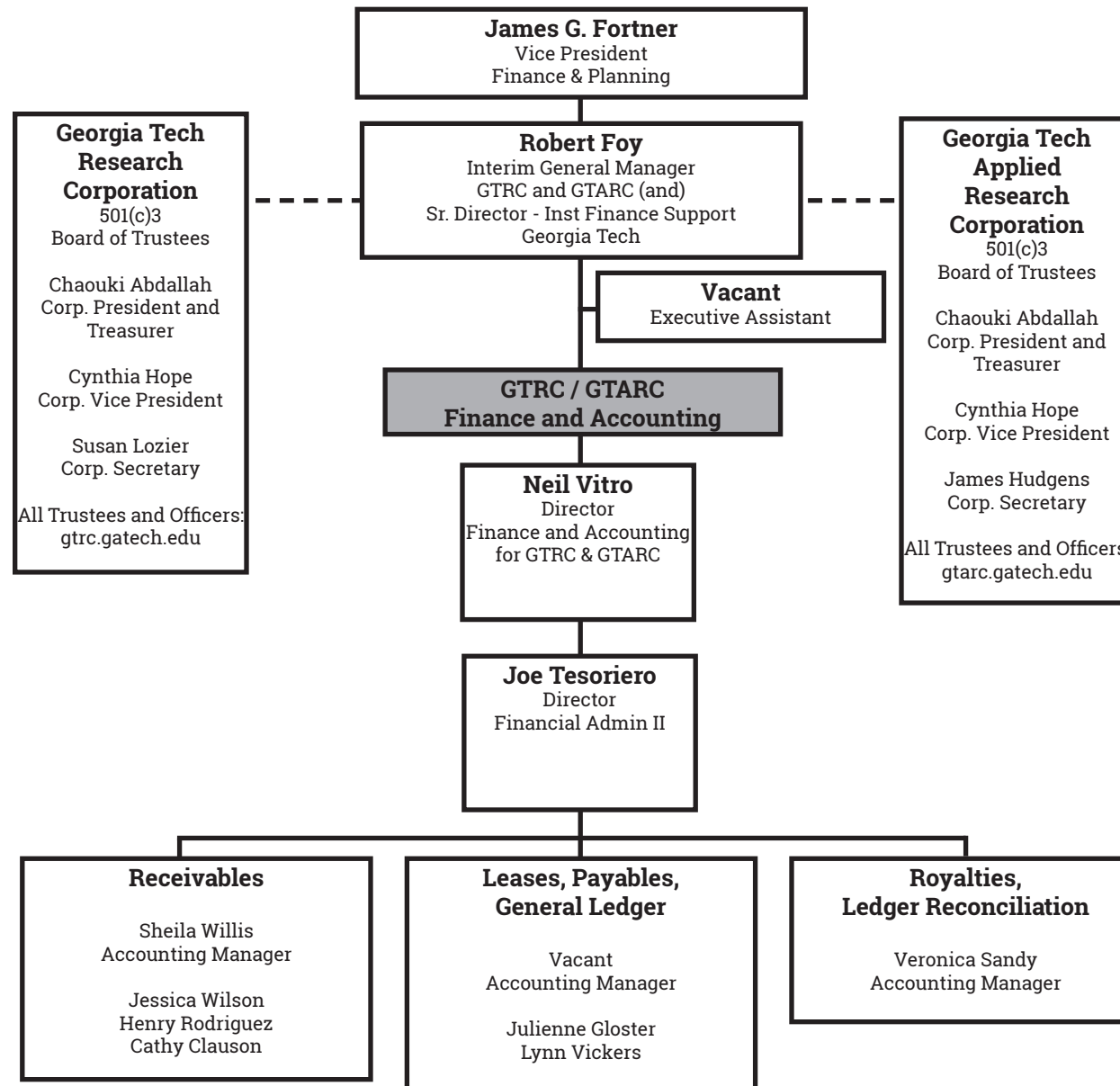
# Research Administration / Sponsored Programs

<http://osp.gatech.edu/>  
<http://gtrc.gatech.edu/>



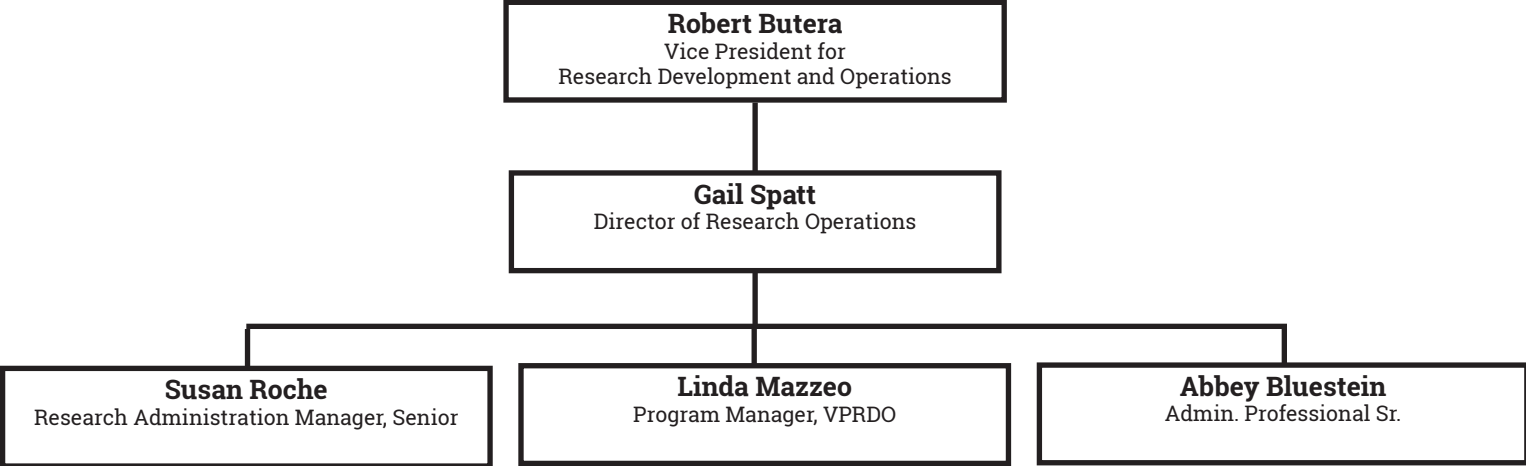
# Research Corporations - GTRC and GTARC

<http://gtrc.gatech.edu/>  
<http://gtarc.gatech.edu/>



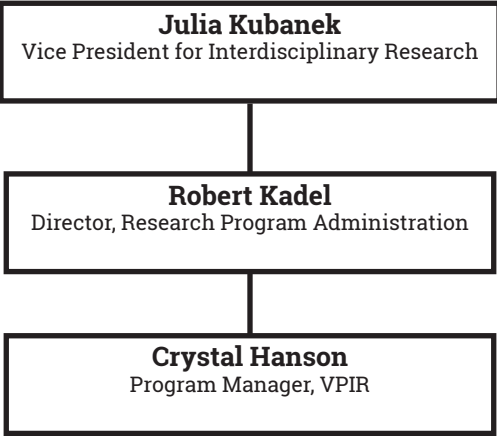
# Administrative Teams Under Vice President for Research Development and Operations (VPRDO)

<http://research.gatech.edu/>

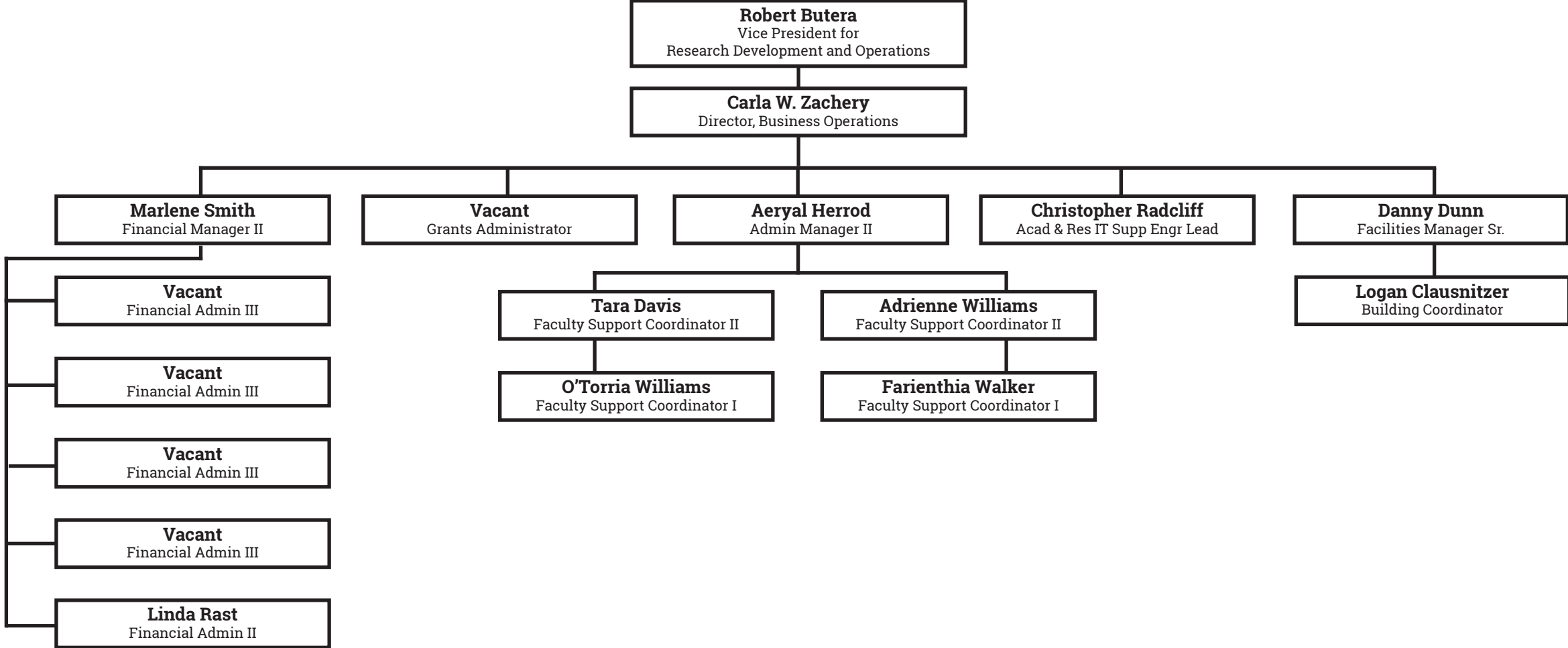


# Administrative Teams Under Vice President for Interdisciplinary Research (VPIR)

<http://research.gatech.edu/>

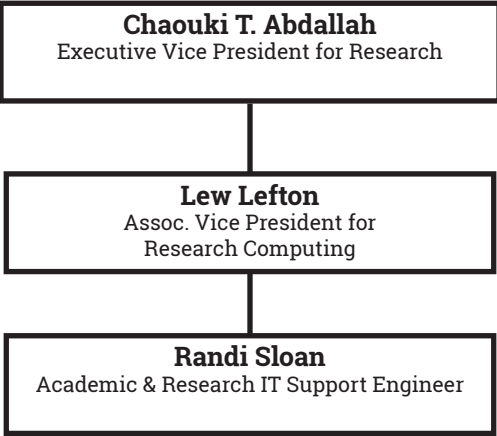


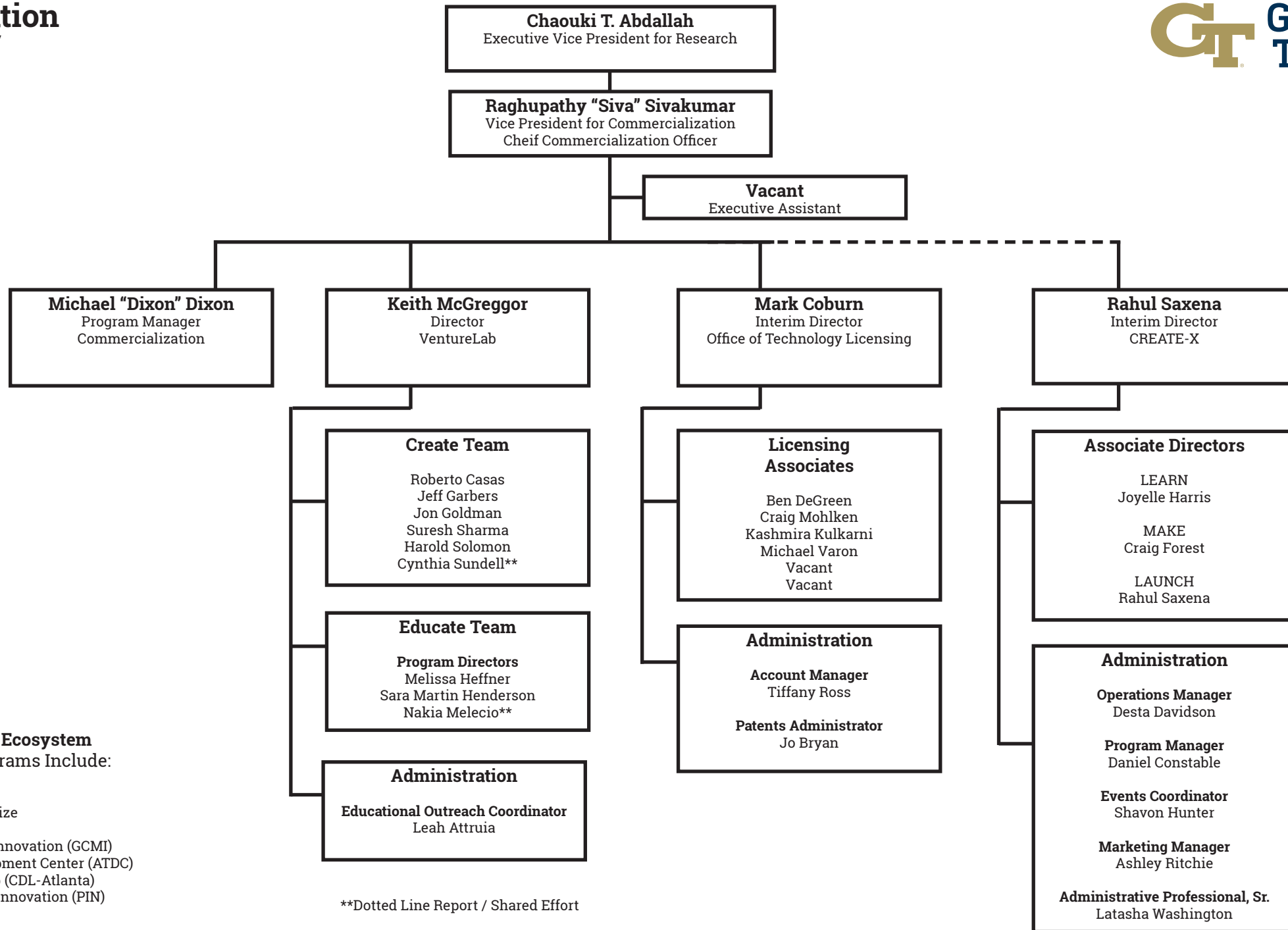
# Krone Engineered Biosystems Building (EBB)



# Research Computing and Information Technology (IT)

<http://research.gatech.edu/>





**Commercialization Ecosystem**  
Allied Units and Programs Include:

- Biocity
- InVenture Prize
- Engage
- Global Center for Medical Innovation (GCMI)
- Advanced Technology Development Center (ATDC)
- Creative Destruction Lab (CDL-Atlanta)
- Partnership for Inclusive Innovation (PIN)

\*\*Dotted Line Report / Shared Effort



